

CDOT Using Redline Files in MicroStation

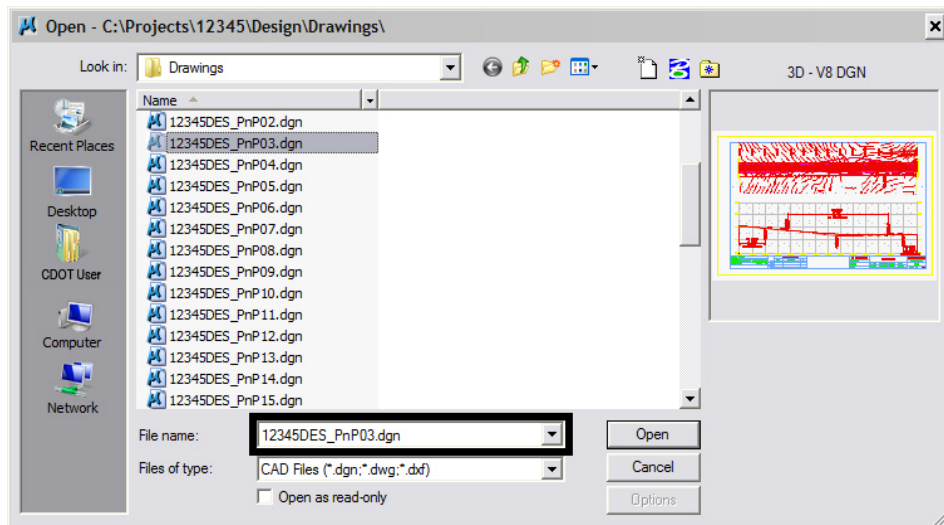


This document is designed to serve as a guide for using CDOT Redlines command within MicroStation. The CDOT Redlines command is used to attach multiple Redline files simultaneously to the same file. The redline files are referenced from the project's Redline folder. For MicroStation design files, the redline files will have the same filename but have different extensions, typically the username of the person who created the redline file. For AutoCAD .dwg files, the rules are slightly different. The redline filenames will carry the .dwg extension but have a _suffix appended to the file name. Like the MicroStation design files, this suffix will typically be the username of the person who created the redline file.

CDOT Redlines

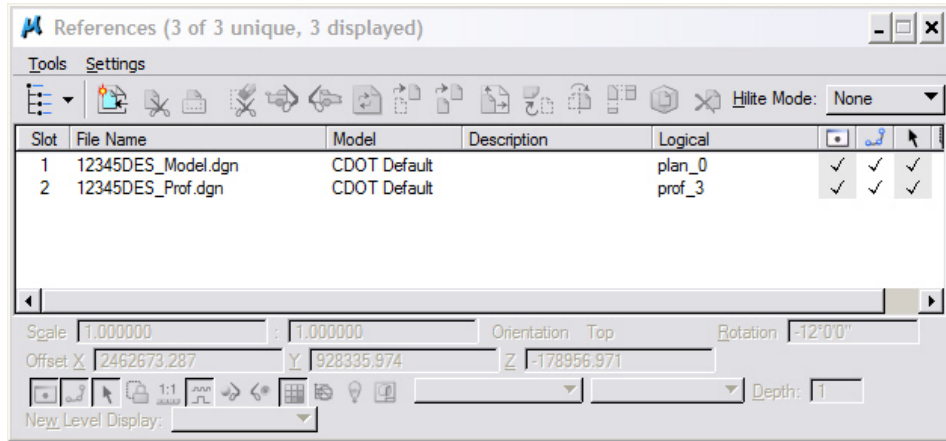
Launching CDOT Redlines

1. Open the MicroStation design file that corresponds to the Redline files. The file *12345DES_PnP03.dgn* is used.

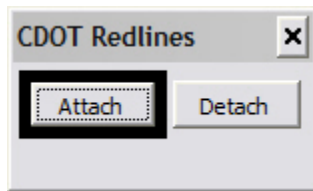


CDOT Redlines.pdf

2. Open the References dialog by choosing, **File > Reference** from the *MicroStation* menu.

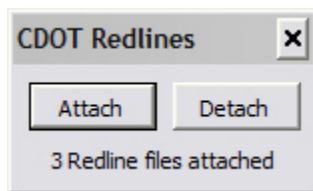


3. From the *CDOT Menu*, select **Add On's > CDOT Redlines**. The *CDOT Redlines* dialog is displayed.



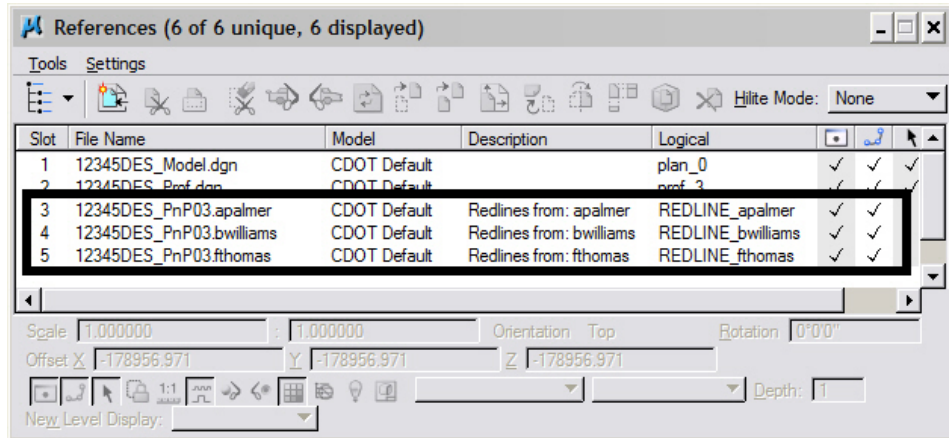
Attaching Redline files

1. <D> the **Attach** button in the *CDOT Redlines* dialog. For this particular example, 3 reference files are attached. This can be verified by reading the message at the bottom of the *CDOT Redlines* dialog.



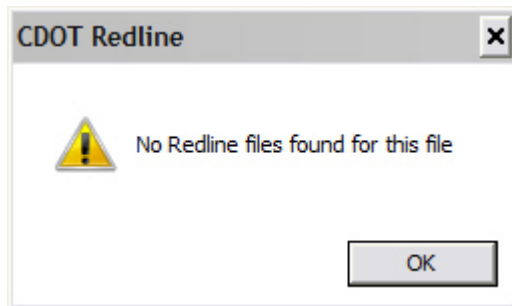
All files with the same file name as the active file (e.g. *12345PlanProfile03*) that are contained in the project's Redline folder, will automatically be attached. All attached redline files will be given a logical name starting with **REDLINE_**. These names appear in the *References* dialog box for each reference file.

CDOT Redlines.pdf



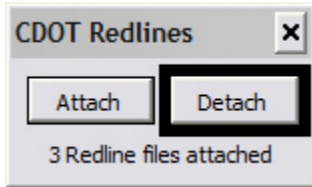
Note: If a particular design file has multiple models in it, the most recently opened model contained in the design file will be attached.

2. If no redline files are found an alert dialog will display. <D> OK to dismiss this dialog box.

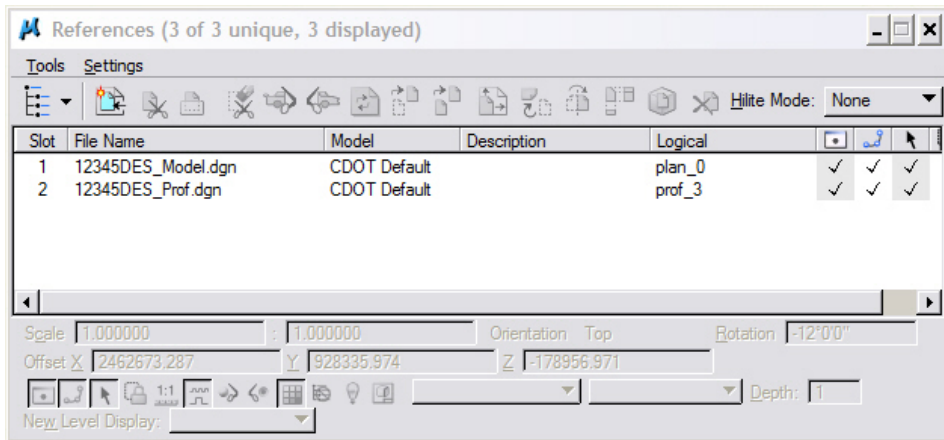


Detaching Redline files

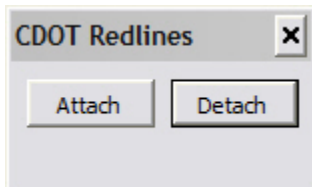
1. <D> the **Detach** button in the *CDOT Redlines* dialog. Any reference file(s) with a logical name starting with **REDLINE_** will be detached.



Continuing the example, the 3 redline reference files are detached.



The display message at the bottom of the dialog box is removed.



2. You may close the dialog by <D> on the red X button on the top right of the dialog box.